

Tokeneke Classic Road Race
New England Regional Championship Road Race
August 14, 2011 – East Hartland, CT

Presented by Cafeteros Cycling Club & Team Mossman Tokeneke Racing
www.tokenekeclassic.com

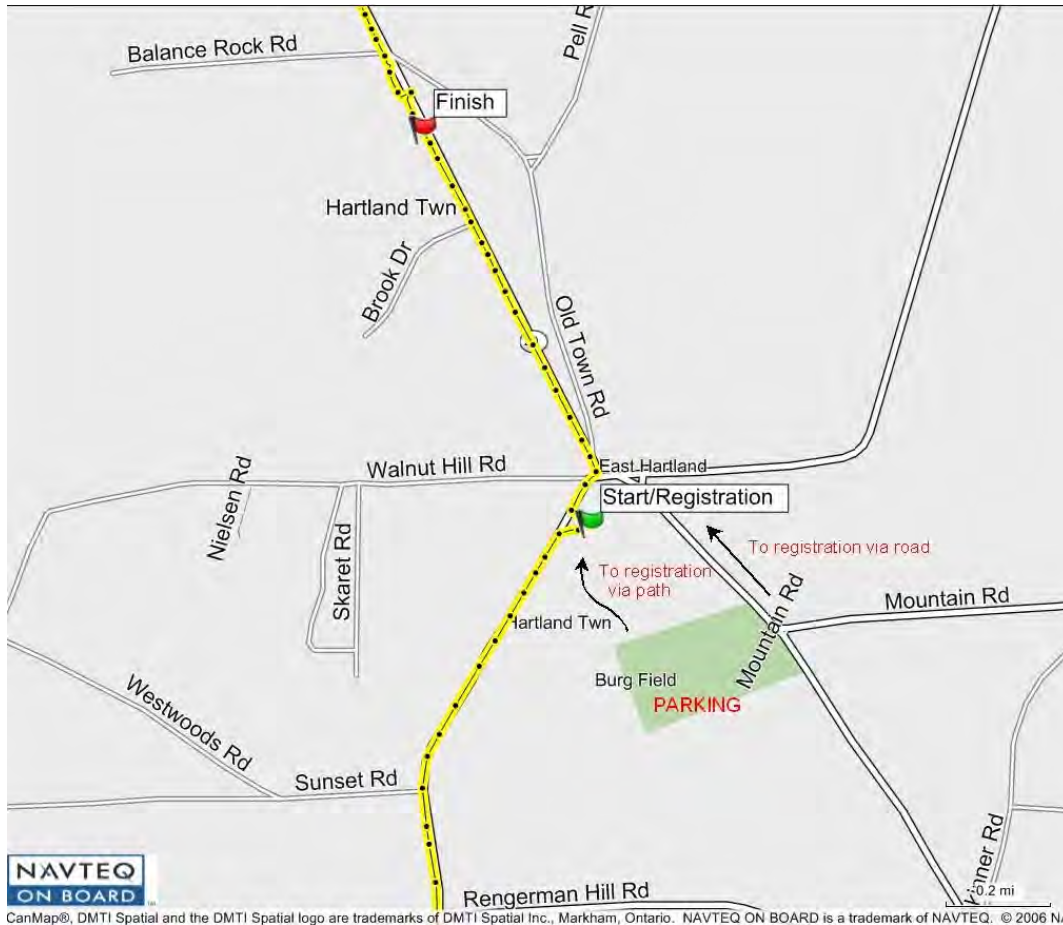
Fact Sheet

- Registration opens at 7:45 am for morning races; 10:30am for Pro/1/2, 11:30am for afternoon races
- Start is to right of Registration desk. Roll out of parking lot, turn left.
- Finish Line 250m past top of hill (Mile 22) on Rt. 20 / No. Hollow Rd. – look for checkered flags
- Feed Zone quarter-mile before Finish Line on Rt. 20 / No. Hollow Rd. Neutral water supplied. **No Feeding Allowed Outside of Feed Zone.**
- Prizes - Cash prizes awarded to top finishers by category (near Start area).
- SRAM Neutral Wheel Support:
 - Morning: Men Cat 4, Men Cat 4/5, Masters 50+,
 - Afternoon: Pro 1/2, Men Cat 3, Women 1/2/3
- Wheels In / Out: Women 4, Masters 40+, Masters 60+, Juniors
- Juniors & Masters 60+ Start Race Together. May work together during race but will be scored separately and have separate prize lists
- Checks Accepted - Payable To: **Cafeteros Cycling Club**
- Restrooms:
 - In school (Men's and Women's)
 - Porta-Potties: School and Berg Field parking lot
- Time-per-lap = roughly one-hour

PARKING

THERE IS NO PARKING AT REGISTRATION. Parking is at Berg (or Burg) Field, on Rt 20 about 0.3 miles south-east of the Rt 20 / Rt 179 intersection. Registration is about 0.5mi, a 10 minute walk from parking. To walk or ride from the Berg field parking area, take the path through the woods or turn left onto Rt 20 west, go 0.3 miles and take left onto Rt 179. Follow signs for registration. We have coordinated with the town to ensure that there is sufficient parking at Berg field.

DETAIL OF PARKING / REGISTRATION / START / FINISH



CanMap®, DMTI Spatial and the DMTI Spatial logo are trademarks of DMTI Spatial Inc., Markham, Ontario. NAVTEQ ON BOARD is a trademark of NAVTEQ. © 2006 NA

START TIMES / REGISTRATION

<i>RACE</i>	<i>TIME</i>	<i>DISTANCE</i>	<i>FIELD LIMIT</i>	<i>ENTRY FEE</i>	<i>PRIZES</i>
<i>Cat 4 men</i>	9:00 AM	44 Miles (2 laps)	100	\$35	\$150 / Top 5
<i>Masters 50+ (cat 1-4)</i>	9:08 AM	44 Miles (2 laps)	100	\$35	\$250 / Top 5
<i>Women 4</i>	9:18 AM	44 Miles (2 laps)	75	\$35	\$150 / Top 5
<i>Cat 4/5 men</i>	9:25 AM	22 Miles (1 lap)	75	\$35	\$50 / Top 3
<i>Pro/1/2</i>	11:45 PM	88 Miles (4 laps)	100	\$35	\$1000 / Top 10
<i>Masters 40+ (cat 1-4)</i>	12:45PM	66 Miles (3 laps)	100	\$35	\$300 / Top 5
<i>Cat 3 men</i>	12:55 PM	66 Miles (3 laps)	100	\$35	\$350 / Top 5
<i>Women 1/2/3</i>	1:03 PM	44 Miles (2 laps)	100	\$35	\$750 / Top 8
<i>Juniors 13-18 (cat1-5)</i>	1:13 PM	44 Miles (2 laps)	75 with M60+	\$25	Medals
<i>Masters 60+ (cat 1-4)</i>	1:13 PM	44 Miles (2 laps)	75 with juniors	\$35	\$100 / Top 3

Note: Juniors and M60+ will start and race together and may work together but will be scored separately and have separate prize lists. **Day-of registration \$15 surcharge.**

REGISTRATION

Day-of registration \$15 surcharge. Number pick-up at the East Hartland Town Hall / School / Volunteer Fire Department and opens at 7:45 AM. Registration will close 20 minutes before the start of each race. One day license available for women Cat. 4 and men Cat. 5.

MISCELLANEOUS

Number Placement: Two numbers – small on your back pocket, large on your right side (facing so the finishing camera can see it).



Mechanics: Trek Bicycle Store of Fairfield (CT) is coming to the race to provide pre-race mechanical support for racers.

Energy Drink: Hammer Nutrition is supplying HEED sports drink and water-bottles prior to the race. They've also provided Endurolytes for all racers – PLEASE HYDRATE – it will be hot.

Littering: Do not throw your gel packs away – put them back in your pocket. Officials will take your number and make you go back to pick it up.

COURSE DESCRIPTION

Course – Hilly 22 mile loop around the Barkhamsted Reservoir with 2100 feet of elevation change per lap. The finishing climb is part of the loop and will be traversed once or more during the race (except Cat. 4/5). The climb itself is about 2.2mi at a consistent 5% grade.

Course Description: The racers start in front of the E Hartland volunteer firehouse and then proceed south on 179, in a clockwise direction around the reservoir. At the junction of Routes 179 and 219 (about 4.3mi), the racers will bear right onto 219 south. The race will move in a clockwise direction so that at intersections the racers turn right, thus avoiding having to cross other lanes of traffic. At the intersection of 219 and 318 (about 6.9mi), the race will bear right onto 318 west and will go over the Saville Dam. Just past the dam at about 7.7mi, the race will turn right onto Beach Rock Road. This is the first climb. At the corner of Beach Rock and 181 (about 8.6mi), the racers will turn right and travel north on Route 181. In West Hartland (about 15.9mi), the race will proceed east on Route 20, completing the lap by returning the racers to the corner of Routes 20 and 179 in East Hartland. See www.tokenekeclassic.com for race course maps.

Start Line will be in front of the East Hartland Volunteer Firehouse.

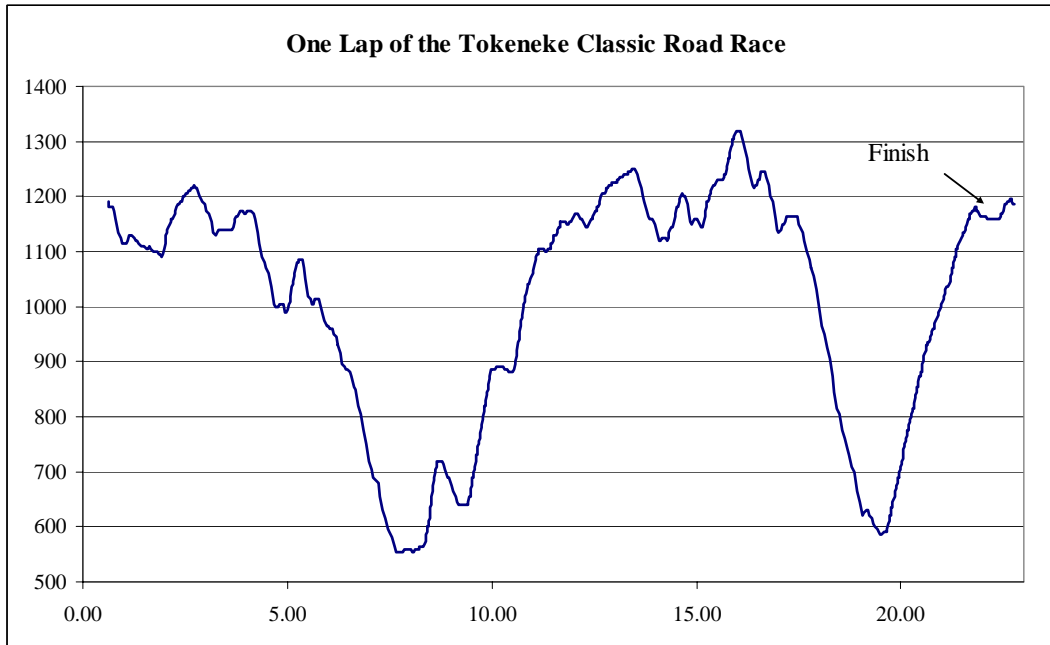
Finish Line is at the top of Rt 20 / N Hollow Rd. We have moved the finish line about 250m further down the road from the 2009 race. The finish will be on the flats about 250m past the crest of the Rt 20 finishing climb (i.e. past the intersection of Rt 20 and Balance Rock Road). We will have finishing flags, so no complaints about missing the finish.

For spectators, the finish is about 1 mile north of the start. Spectators can walk from the start, or please park **off the main road** on either Brook Drive - south of the finish - or Old Town Road - north of the finish.

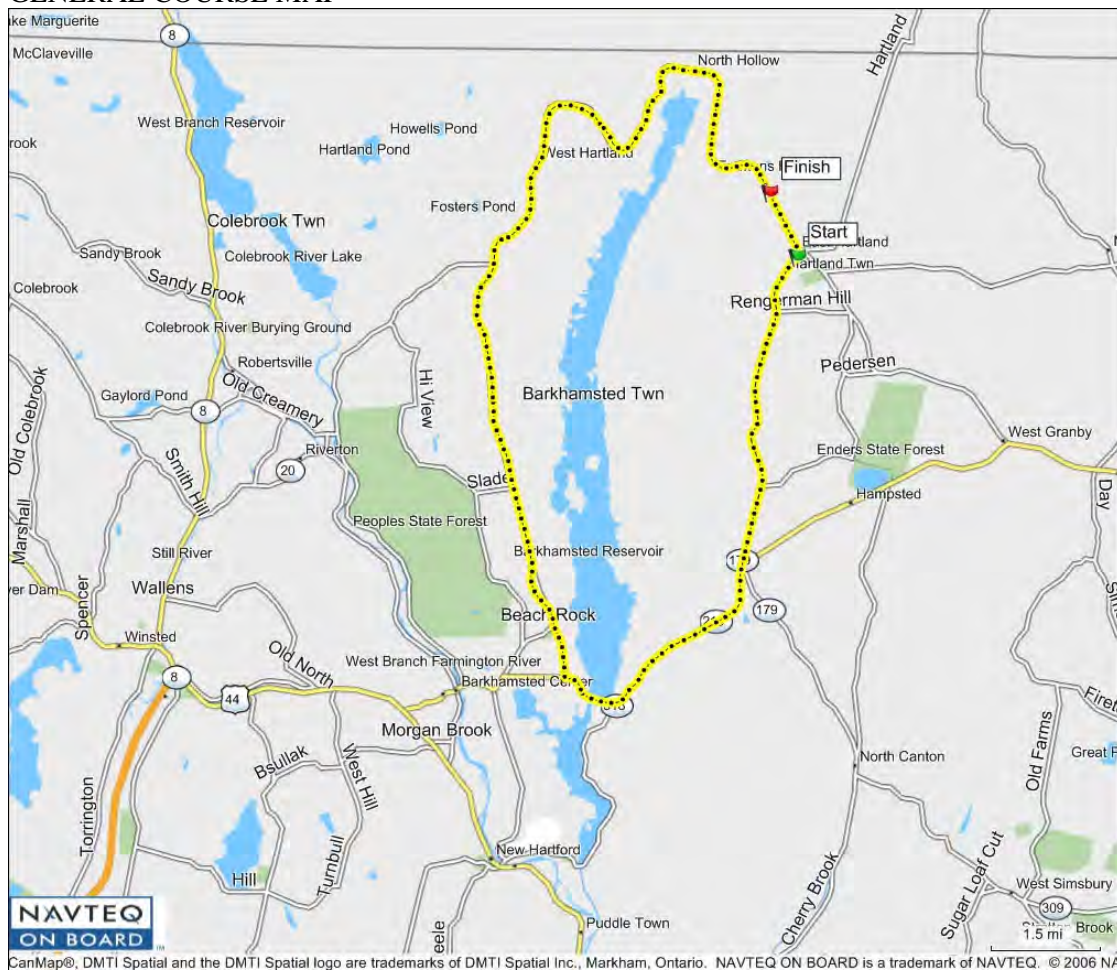
Feed Zone will be a few hundred meters before the finish line on Rt 20 / N Hollow Rd. No feeding outside the feed zone. Neutral water will be supplied.

Road Conditions We rode the course several weeks ago. The roads are in excellent shape.

Race Profile



GENERAL COURSE MAP



DIRECTIONS

GPS For those wanting to use GPS, the address of the parking at Berg (or Burg) field is, according to Garmin: Burg Field, 93 Hartland Blvd, East Hartland, CT 06027, with Lat/Long co-ordinates N41.99395 W72.89969 (WGS84). Registration (no parking at registration) is N41.99755 W72.90659.

I-91 – From the North (Boston, etc.) From I-91, take exit 40 for Rt 20. Follow signs to Rt 20 West. Stay on Rt 20 West through Granby and West Granby. Follow signs for parking at Berg Field in East Hartland. Distance from Exit 40 is approximately 17 miles.

Waterbury, CT I-84 – From the South (NYC, southern CT, etc.) From I-84, take exit for Rt 8 North in Waterbury. Follow Rt 8 North into Winsted - 27 miles. Take the US-44/CT-183/CT-8/S Main St exit at end of expressway. Turn LEFT onto Rt 44 East. Stay straight on Rt 44 East 3.5 miles. Turn left onto Ripley Hill Rd/CT-318. Ripley Hill Rd/CT-318 becomes Pleasant Valley Rd/CT-181/CT-318. Turn right onto CT-318/Saville Dam Rd. CT-318/Saville Dam Rd becomes E Hartland Rd/CT-219. E Hartland Rd/CT-219 becomes E Hartland Rd/CT-179/CT-219. Stay straight on E Hartland Rd/CT-179. Go past registration and turn right onto Rt 20 East – 0.3 miles. Follow signs for parking at Berg Field in East Hartland.

Promoter reserves the right to combine fields, reduce mileage or cancel race. Approved helmet required. All USA Cycling rules apply. No tri-bars. No tank-tops. No mountain bikes.

CHAMPIONSHIP AND POINTS AFFILIATIONS

NEW ENGLAND REGIONAL CHAMPIONSHIP: The Tokeneke Classic has been chosen as the USAC New England Regional Championship Road Race for 2011. Any rider holding a current USA Cycling annual license who is a USA citizen or permanent resident and resides in New England as shown on their license is eligible for championship medals. (The Tokeneke Classic itself is open to all licensed riders irrespective of residency, but only New England residents qualify for medals.) Medals will be awarded for Senior Men and Women (Espoir and 23-29) in the Pro 1/2 and Women 1/2/3 fields. Masters men and women medals by 10-year age group from 30-39 up through 60+; men 30-39 in the Pro/1/2 field, 40+ in age group fields, women in the Women 1/2/3 field. Junior medals will be awarded to men 13-14, 15-15, 17-18 in the Juniors race; to women 13-14, 15-16 in the Women's 4 field and to women 17-18 in the Women's 1/2/3 field.

JUNIORS: This is a LAJRS event (Lance Armstrong Junior Road Series, see www.usacycling.org/lajrs). Medals will be distributed as follows: Men (13-14, 15-16, 17-18) in their own race. Women (13-14, 15-16) in the women's 4 race. Espoir men in the Pro/1/2 race, espoir women and women 17-18 in the Women 1/2/3 race. Junior one-day licensees are eligible for LAJRS medals. Junior women may race for \$25 – junior women who register online can receive a \$10 rebate on race day.